



ESA's Sentinel-2

Spectral Discovery for Sentinel-2 Imagery

(DOS- and GUI-based Version 3.1)

Unique software tool to **easily and rapidly** make colourful and detail-rich **Sentinel-2** imagery composites at **10m**-resolution, with **3** simple button clicks:

- Band Combination
- Image Stretching
- Image Pan-sharpening
- Exploratory Image Feature Extraction

Developers: BigData Earth | GeoSage
<http://www.BigDataEarth.com/> | <http://www.GeoSage.com/>

Updated 1 March 2020

GUI : Sentinel-2 RGB / Stretch / Fuse / Feature Extraction

SOURCE: Spectral Discovery for Sentinel-2 Imagery, www.BigDataEarth.com, (C) 2020.
(This is a FULL Perpetual License.)

1. Input Sentinel-2 Imagery Bands in JPEG2000 + Convert JPEG2000 to GeoTIFF format

Metadata: **A:** **B: Convert JP2 -> GTiff**

Red: Use 10m-resolution bands

Green: Use 20m-resolution bands

Blue: Use 60m-resolution bands

+ "Pan" (10m band):

Linear Stretch (Cutoffs at both ends, %)

	Left side	Right side
Red	<input type="text" value="1"/>	<input type="text" value="0.2"/>
Green	<input type="text" value="1"/>	<input type="text" value="0.2"/>
Blue	<input type="text" value="1"/>	<input type="text" value="0.2"/>

+ Nonlinear Stretch

	Range 0 - 40
Red	<input type="text" value="10"/>
Green	<input type="text" value="10"/>
Blue	<input type="text" value="10"/>

2. Outputs (in GeoTIFF format)

Step 1 output: ...
 Applying simple and convenient bands combination

Step 2 output: ...
 Applying linear and non-linear image stretching

Step 3 output: ...
 Applying advanced and fast image pan-sharpening

+ More Tools for Full Perpetual License

+ Rapidly calculating image feature indices and band ratios (each with 3 outputs in GeoTIFF)

Threshold:
 (Threshold = ~0.3 +/-0.1) (Threshold = ~0.15 +/-0.05)

Generic form:

Band A:

Band B:

Table of Contents

1. Download Sentinel-2 Level-1C Imagery Data	1
1.1 - Method 1	1
1.2 - Method 2	5
1.3 - Method 3	8
1.4 - Method 4	9
2. Install DOS-/GUI-based Spectral Discovery for Sentinel-2 Imagery	10
3. Run GUI	11
4. Display Stretched and Pan-sharpened Imagery Composites in Google Earth Pro	12
5. Additional Features for Innovative Applications	13
Appendix - Main Steps in DOS-based Spectral Discovery for Sentinel-2 Imagery.....	15

1. Download Sentinel-2 Level-1C Imagery Data

There are many ways to obtain open Sentinel-2 imagery these days. The most convenient way is probably via Amazon Web Services and Google Earth Engine.

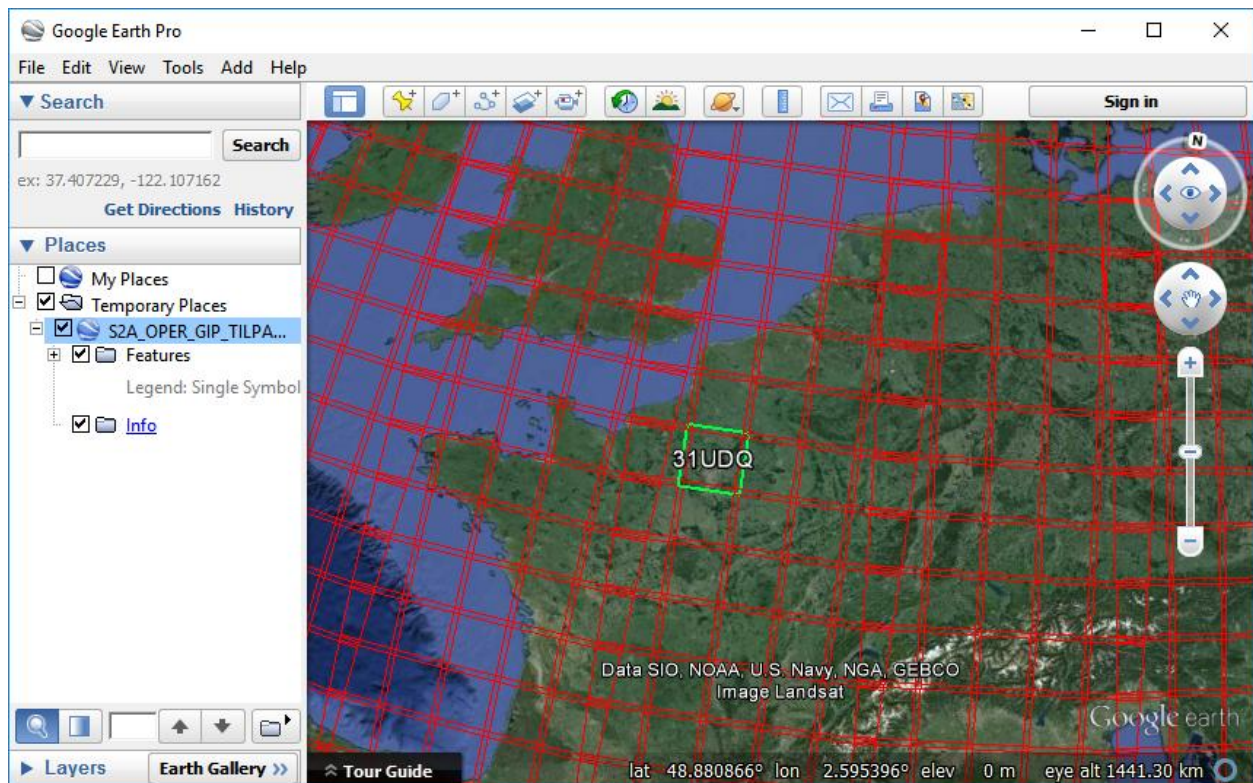
1.1 - Method 1

Sentinel-2 on AWS: public bucket `sentinel-s2-l1c`

<https://registry.opendata.aws/sentinel-2/>

Sentinel-2 imagery uses a **granule/tile** system which is based on the NATO [Military Grid Reference System \(MGRS\)](#). The **Sentinel-2 Level-1C tiling grid** in Google Earth KML format can be downloaded from ESA - [KML file](#) (~103MB); alternatively, a compressed version can be downloaded [here](#) (~9 MB).

Open this KML file in Google Earth, and then locate the **[UTM code]/latitude band/square/** for an **Area of Interest (AOI)**. For example, tile name for Paris: 31/U/DQ/ (as shown in the figure below). Each granule/tile is 100 x 100 km (excluding overlapping edges).



Tile name for a few other cities following the tiling grid format: **[UTM code]/latitude band/square/**
San Francisco, the U.S.: 10/S/EG/ Cape Town, South Africa: 34/H/BH/
Rio, Brazil: 23/K/PQ/ Rome, Italy: 33/T/TG/
Beijing, China: 50/T/MK/ Perth, Australia: 50/H/LK/

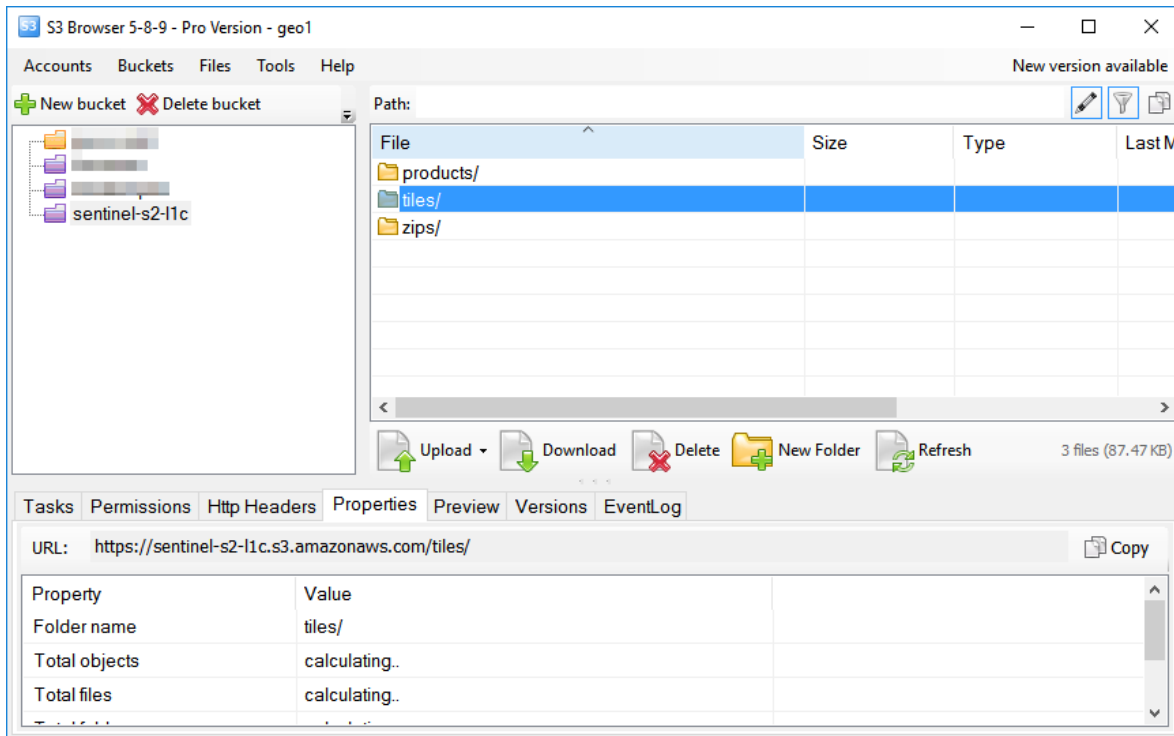
After knowing the location (tiling grid) for the AOI, you can start to browse and download imagery bands, via the Sentinel-2 public bucket on AWS.

Notes:

We suggest users download Sentinel-2 imagery files from AWS S3 based on **whole data folders** (not single files), using GUI-based tools such as **S3 Browser** (<http://s3browser.com/>).

Many similar tools, including AWS Command Line Tools, can make data download very quickly and efficiently. FYI – “Accessing Landsat and Sentinel-2 on Amazon Web services” available at <http://ears.org/news/accessing-landsat-and-sentinel-2-on-amazon-web-services>

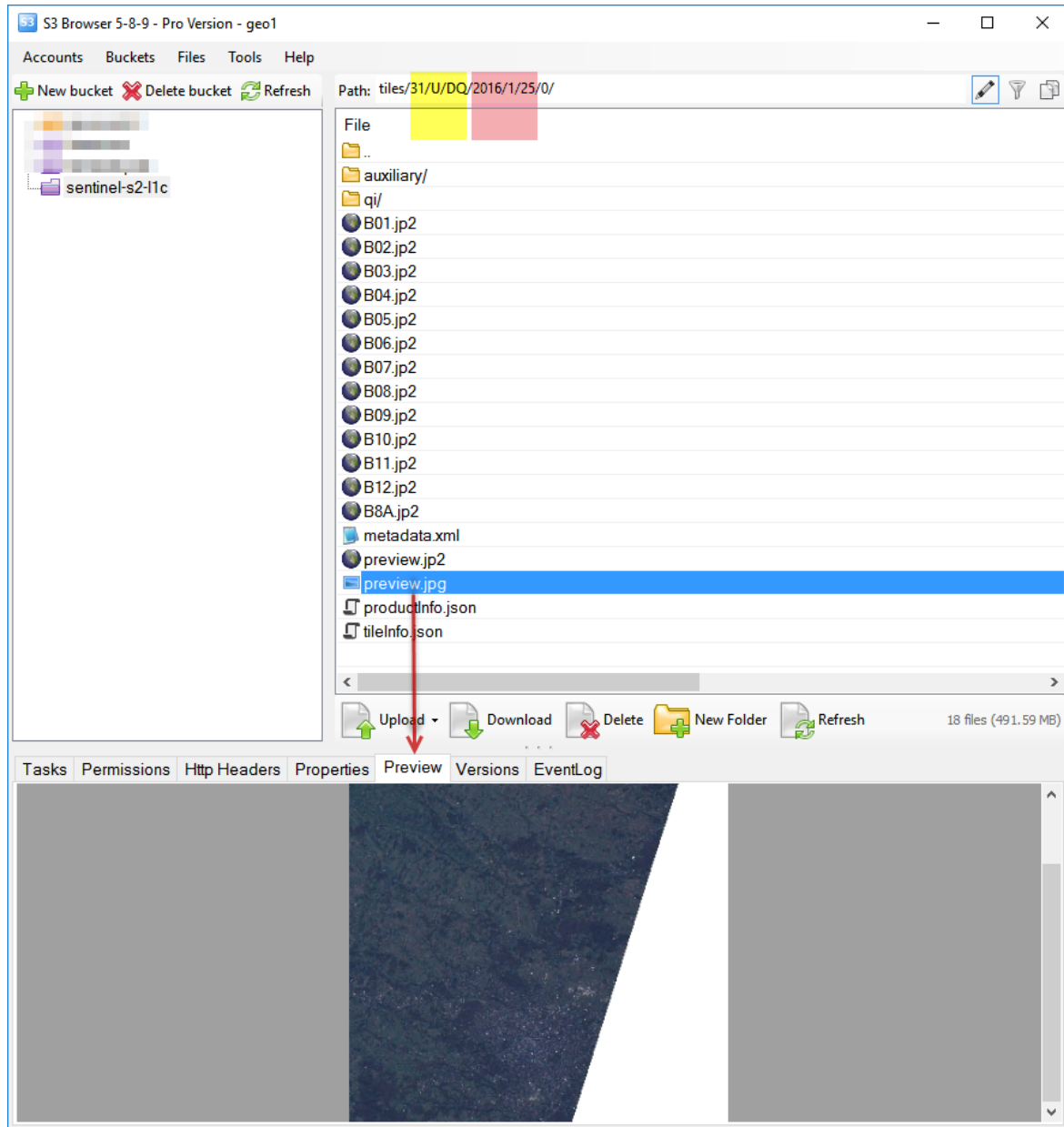
For example, in **S3 Browser**, first add the Sentinel-2 data **public bucket** using the menu **Buckets | Add External Bucket: sentinel-s2-l1c**, and then start to browse and download Sentinel-2 data, folder by folder. (S3 Browser Pro Version promises faster download, e.g. by x5, x10 times.)



In what follows, we briefly demonstrate how to download files by **tiles**.

Tiles

The following figure shows an example of imagery files for Paris: tiling grid **31/U/DQ/**, image date **2016-01-25**. One may just download the 2016-01-25 folder (containing all imagery files within) to a local hard drive. Each granule/tile is about 500 MB in file size.

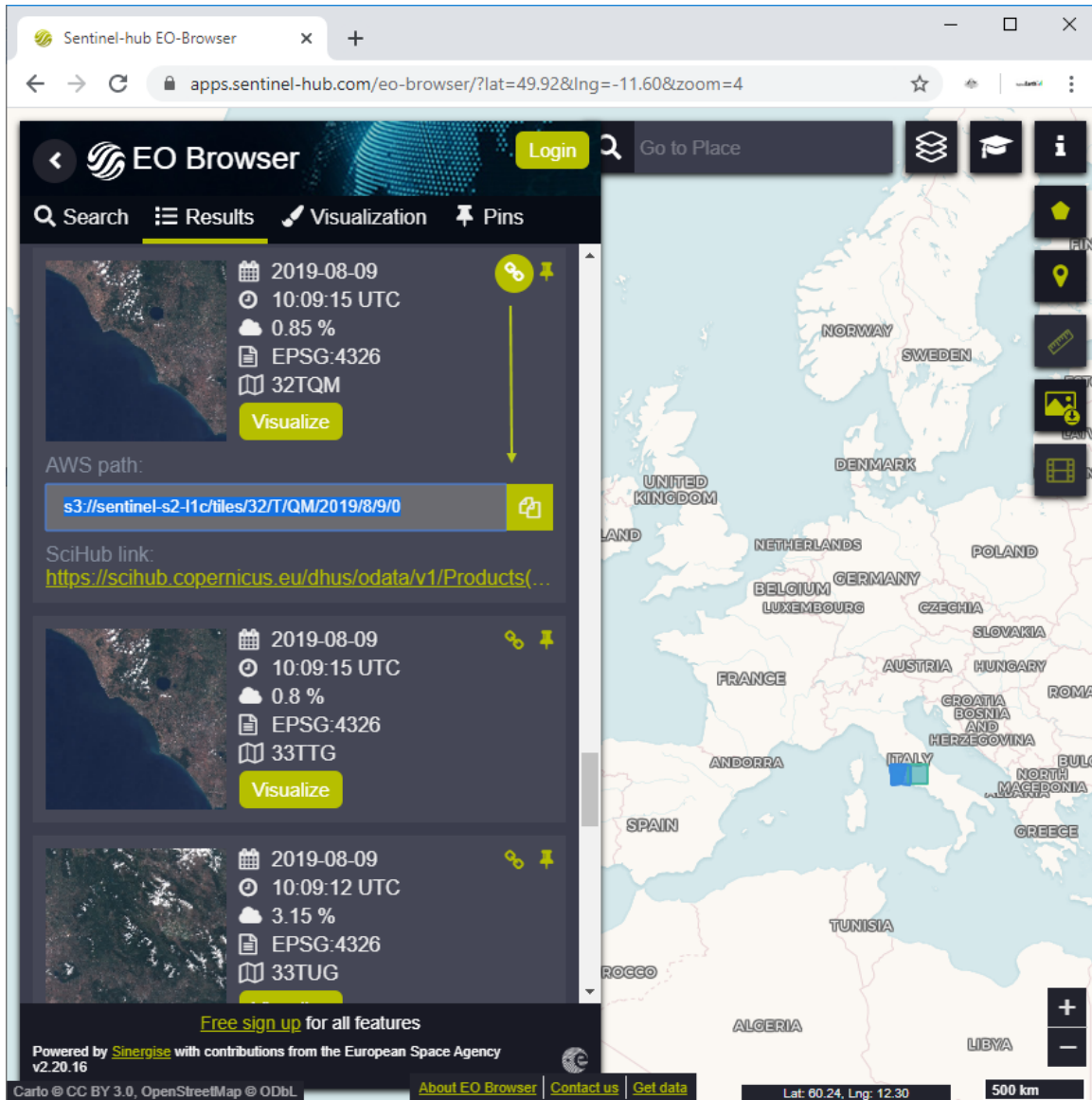


Spectral Discovery for Sentinel-2 Imagery software processes granules/tiles directly downloaded from AWS. **metadata.xml** file is **included** in the granule/tile data folder, and each band is indicated by **short file names**. **The software reads metadata.xml as the first input.**

FYI - Search the imagery of interest via easy-to-use web-based mapping App **EO Browser**

<https://apps.sentinel-hub.com/eo-browser/>

After searching imagery for a particular AOI, one can get **AWS path** for the imagery data (as shown the figure below).

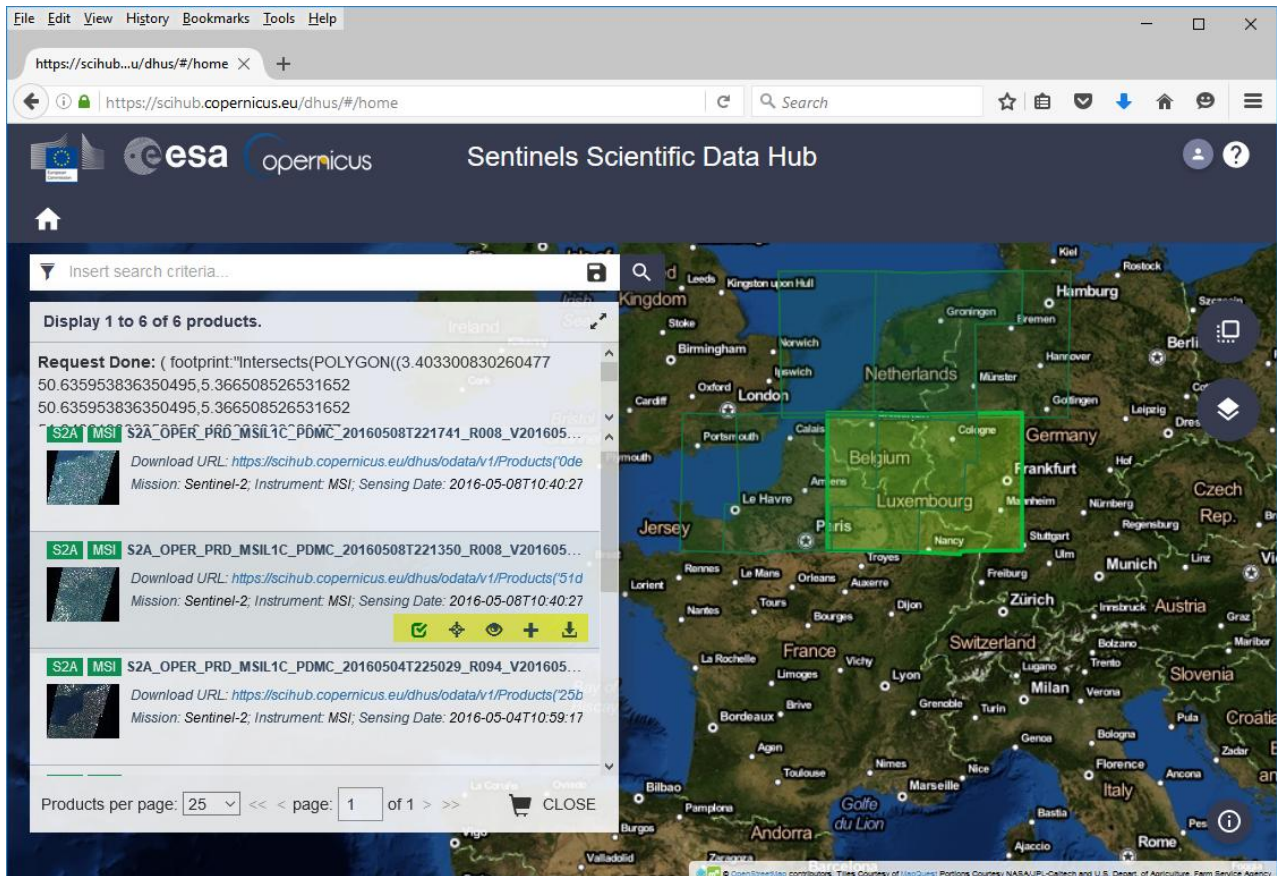


1.2 - Method 2

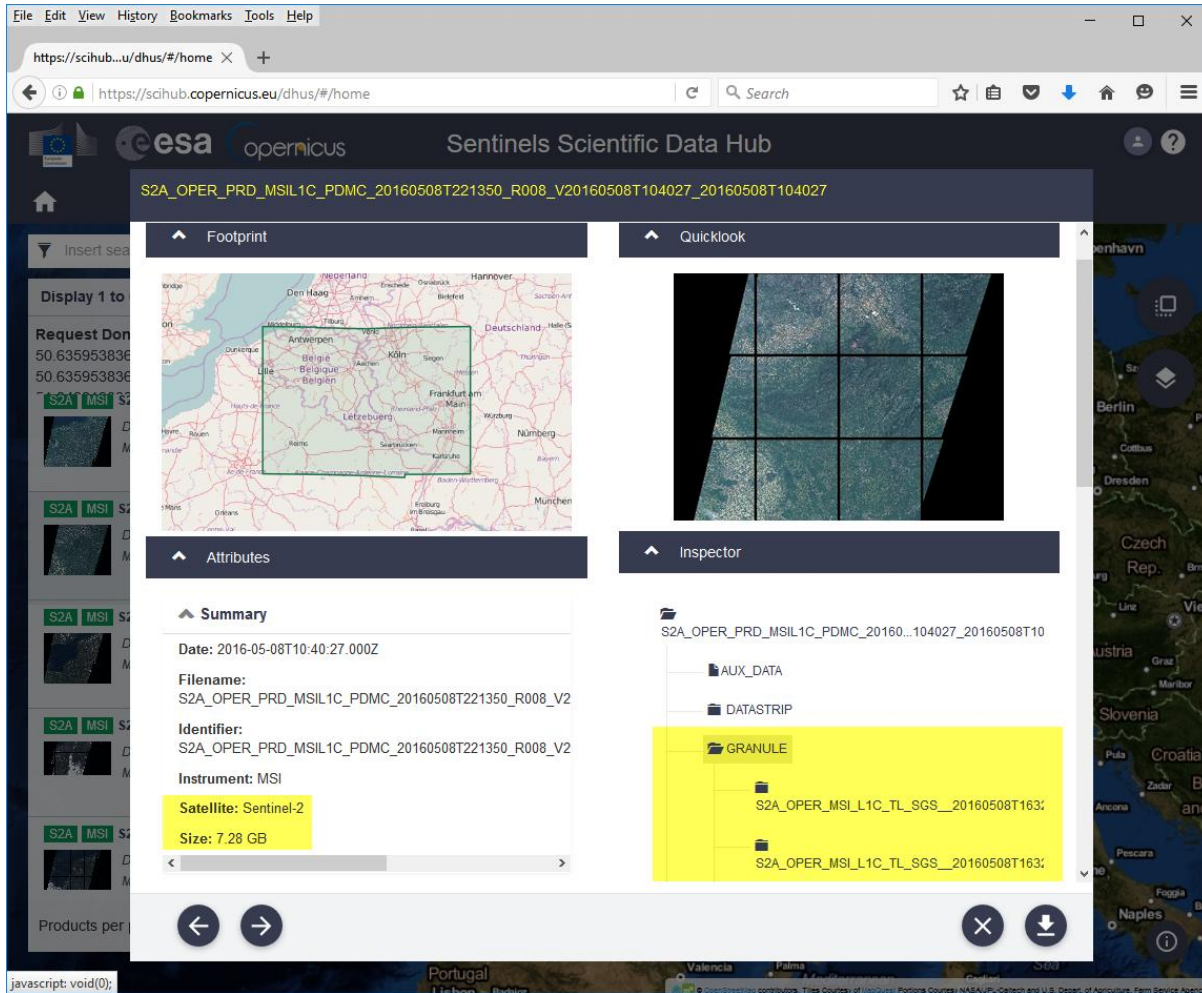
Via ESA's Sentinels Scientific Data Hub - <https://scihub.copernicus.eu/>

Or, directly go to map-based imagery search tool: <https://scihub.copernicus.eu/dhus/#/home>

- Login
- Define AOI
- Define search criteria
- Highlight the scene of interest and preview the imagery

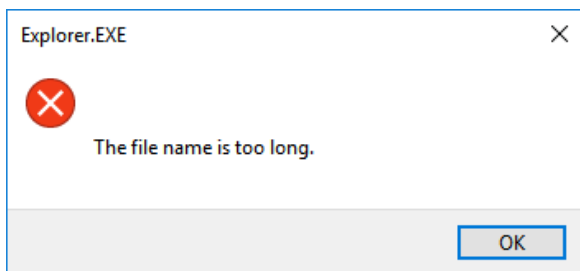


By this method, one can download Sentinel-2 imagery **scenes** (made up of ~12 **granules / tiles**, as seen in Method 1 above). Each scene is quite large given the wide swath of 290 km and the image resolution of 10 m. Each scene at 10m-resolution is about 30,000 x 30,000 pixels. The file size of a single scene (downloadable zip file) could be far greater than 10 GB.



In Sentinel-2 data structure, each scene is divided into many (e.g. 12) smaller-sized, overlapping **granules / tiles**, and each granule / tile is 100 x 100 km (not including overlapping areas).

A common issue users often experience when unzipping the downloaded Sentinel-2 imagery scene file is that the length of file path exceeds 256 characters. Windows OS might display the following error message. It is up to the user to plan that the length of each input and output file path does not exceed the limit of 256 characters. (*Spectral Discovery for Sentinel-2 Imagery* software automatically appends file name extensions such as "_Res10m_Stretch.tif" and checks the length of file paths.)



Let's take a look at an example: The following downloaded **scene** contains 15 **granules** under the **\GRANULE** folder: `..\Download\S2A_OPER_PRD_MSIL1C_PDMC_20160508T221350_R008_V20160508T104027_20160508T104027\GRANULE\`

Name	Date modified	Type
S2A_OPER_MSIL1C_TL_SGS_20160508T163213_A004581_T31UEQ_N02.02	23-May-16 4:42 PM	File folder
S2A_OPER_MSIL1C_TL_SGS_20160508T163213_A004581_T31UER_N02.02	23-May-16 4:42 PM	File folder
S2A_OPER_MSIL1C_TL_SGS_20160508T163213_A004581_T31UES_N02.02	23-May-16 4:42 PM	File folder
S2A_OPER_MSIL1C_TL_SGS_20160508T163213_A004581_T31UFQ_N02.02	23-May-16 4:43 PM	File folder
S2A_OPER_MSIL1C_TL_SGS_20160508T163213_A004581_T31UFR_N02.02	23-May-16 4:43 PM	File folder
S2A_OPER_MSIL1C_TL_SGS_20160508T163213_A004581_T31UFS_N02.02	23-May-16 4:43 PM	File folder
S2A_OPER_MSIL1C_TL_SGS_20160508T163213_A004581_T31UGQ_N02.02	23-May-16 4:43 PM	File folder
S2A_OPER_MSIL1C_TL_SGS_20160508T163213_A004581_T31UGR_N02.02	23-May-16 4:43 PM	File folder
S2A_OPER_MSIL1C_TL_SGS_20160508T163213_A004581_T31UGS_N02.02	23-May-16 4:43 PM	File folder
S2A_OPER_MSIL1C_TL_SGS_20160508T163213_A004581_T32ULA_N02.02	23-May-16 4:43 PM	File folder
S2A_OPER_MSIL1C_TL_SGS_20160508T163213_A004581_T32ULB_N02.02	23-May-16 4:43 PM	File folder
S2A_OPER_MSIL1C_TL_SGS_20160508T163213_A004581_T32ULV_N02.02	23-May-16 4:43 PM	File folder
S2A_OPER_MSIL1C_TL_SGS_20160508T163213_A004581_T32UMA_N02.02	23-May-16 4:43 PM	File folder
S2A_OPER_MSIL1C_TL_SGS_20160508T163213_A004581_T32UMB_N02.02	23-May-16 4:43 PM	File folder
S2A_OPER_MSIL1C_TL_SGS_20160508T163213_A004581_T32UMV_N02.02	23-May-16 4:43 PM	File folder

Then, each **granule** contains a metadata file (*.xml), **image data** and other folders. *Spectral Discovery for Sentinel-2 Imagery* software targets and processes these **granules / tiles**, and the metadata file (*.xml) located here is **the first input to the software**. Please note again what is required is the metadata file (*.xml) specific to the **granule/tile**, not the metadata file (also in *.xml) specific to the **whole scene**.

Name	Date modified	Type
AUX_DATA	23-May-16 4:42 PM	File folder
IMG_DATA	23-May-16 4:42 PM	File folder
QI_DATA	23-May-16 4:42 PM	File folder
S2A_OPER_MTD_L1C_TL_SGS_20160508T163213_A004581_T31UEQ.xml	09-May-16 8:06 AM	XML File

For each granule, the **IMG_DATA** folder contains a total of 13 imagery bands in JPEG2000 format.

Name	Date modified	Type	Size
S2A_OPER_MSIL1C_TL_SGS_20160508T163213_A004581_T31UEQ_B01.jp2	09-May-16 8:06 AM	JP2 File	2,643 KB
S2A_OPER_MSIL1C_TL_SGS_20160508T163213_A004581_T31UEQ_B02.jp2	09-May-16 8:07 AM	JP2 File	64,408 KB
S2A_OPER_MSIL1C_TL_SGS_20160508T163213_A004581_T31UEQ_B03.jp2	09-May-16 8:07 AM	JP2 File	68,977 KB
S2A_OPER_MSIL1C_TL_SGS_20160508T163213_A004581_T31UEQ_B04.jp2	09-May-16 8:07 AM	JP2 File	71,069 KB
S2A_OPER_MSIL1C_TL_SGS_20160508T163213_A004581_T31UEQ_B05.jp2	09-May-16 8:06 AM	JP2 File	21,362 KB
S2A_OPER_MSIL1C_TL_SGS_20160508T163213_A004581_T31UEQ_B06.jp2	09-May-16 8:06 AM	JP2 File	22,457 KB
S2A_OPER_MSIL1C_TL_SGS_20160508T163213_A004581_T31UEQ_B07.jp2	09-May-16 8:07 AM	JP2 File	23,239 KB
S2A_OPER_MSIL1C_TL_SGS_20160508T163213_A004581_T31UEQ_B08.jp2	09-May-16 8:07 AM	JP2 File	81,452 KB
S2A_OPER_MSIL1C_TL_SGS_20160508T163213_A004581_T31UEQ_B8A.jp2	09-May-16 8:07 AM	JP2 File	23,360 KB
S2A_OPER_MSIL1C_TL_SGS_20160508T163213_A004581_T31UEQ_B09.jp2	09-May-16 8:06 AM	JP2 File	2,714 KB
S2A_OPER_MSIL1C_TL_SGS_20160508T163213_A004581_T31UEQ_B10.jp2	09-May-16 8:06 AM	JP2 File	1,357 KB
S2A_OPER_MSIL1C_TL_SGS_20160508T163213_A004581_T31UEQ_B11.jp2	09-May-16 8:07 AM	JP2 File	21,443 KB
S2A_OPER_MSIL1C_TL_SGS_20160508T163213_A004581_T31UEQ_B12.jp2	09-May-16 8:07 AM	JP2 File	21,030 KB

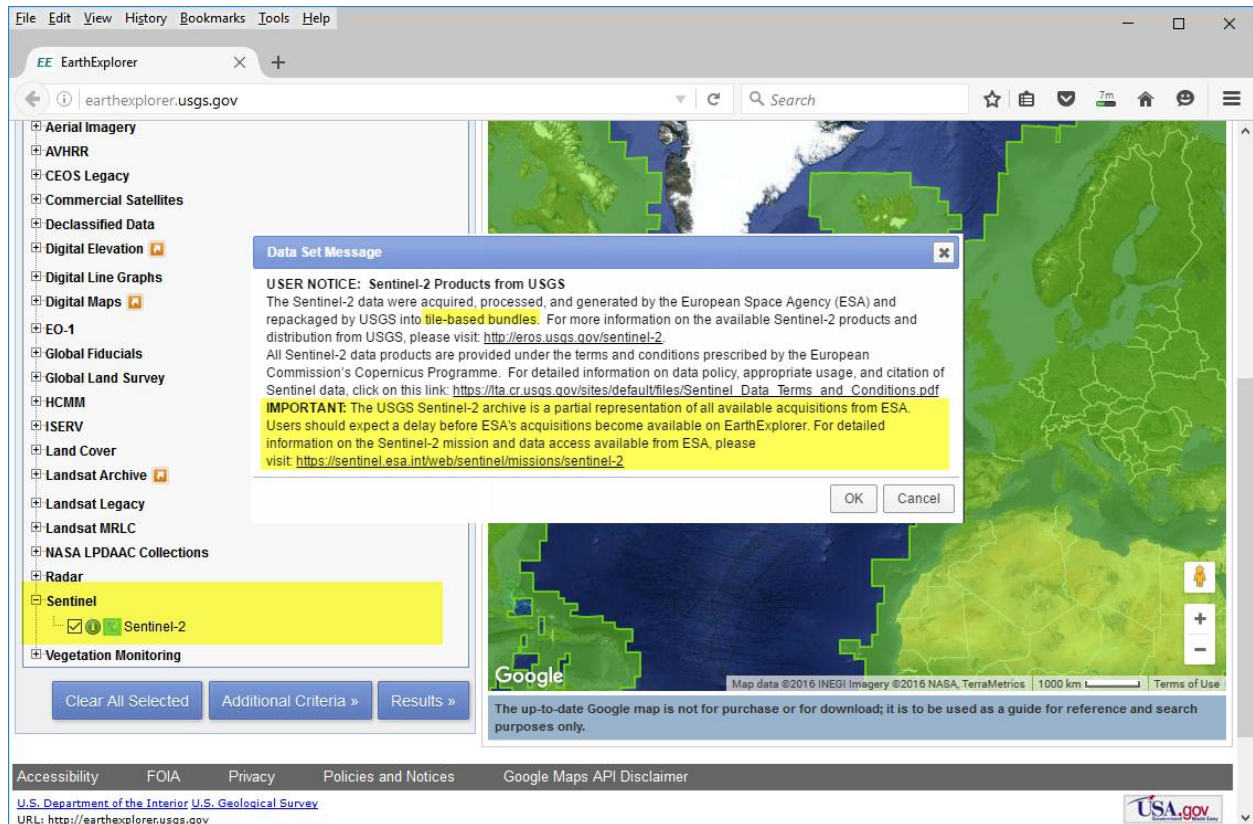
1.3 - Method 3

Via the USGS EarthExplorer and the USGS GloVis

[News](#) - "USGS Partners with European Space Agency to Deliver Copernicus Earth Data"

USGS Sentinel-2 portal: <https://www.usgs.gov/centers/eros/science/usgs-eros-archive-sentinel-2>

USGS EarthExplorer - <http://earthexplorer.usgs.gov/>



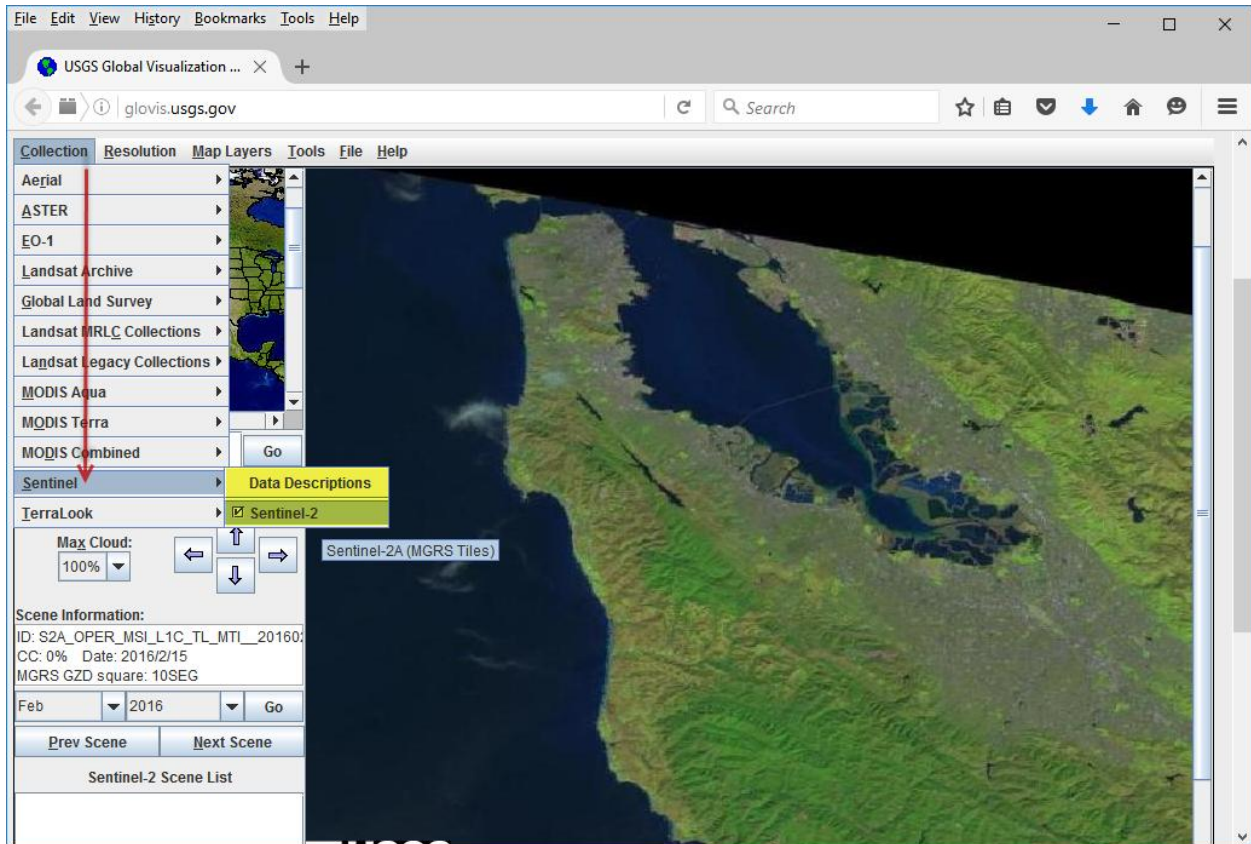
USGS Earth Explorer includes this Data Set Message:

USER NOTICE: Sentinel-2 Products from USGS

The Sentinel-2 data were acquired, processed, and generated by the European Space Agency (ESA) and repackaged by USGS into **tile-based bundles**. For more information on the available Sentinel-2 products and distribution from USGS, please visit: <http://eros.usgs.gov/sentinel-2>.

IMPORTANT: The USGS Sentinel-2 archive is a **partial representation** of all available acquisitions from ESA. Users should expect a delay before ESA's acquisitions become available on EarthExplorer. For detailed information on the Sentinel-2 mission and data access available from ESA, please visit: <https://sentinel.esa.int/web/sentinel/missions/sentinel-2>

USGS GloVis - <http://glovis.usgs.gov/>



The imagery data downloaded from the **USGS EarthExplorer and GloVis** contains two parts:

- Level-1C Tile in JPEG2000 format
- Full Resolution Browse in GeoTIFF format

Once unzipped, the file structure for each granule/tile is similar to that in **Method 2**; that is, the metadata file (the first input required by the software) is located along with the **IMG_DATA** folder.

Notes:

As indicated above, because Sentinel-2 imagery data on the USGS portal is only a partial collection of the entire Sentinel-2 data sets, users may try to download complete imagery data via Method 1 and Method 2 introduced above.

1.4 - Method 4

Sentinel-2 imagery on Google Earth Engine and Google Cloud Platform:

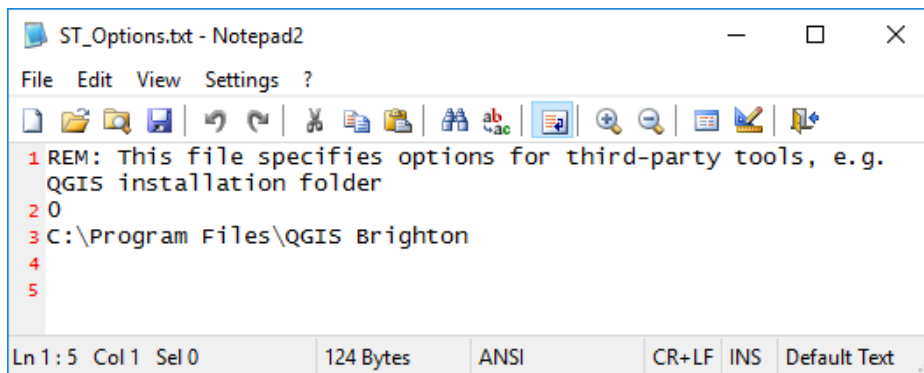
<https://cloud.google.com/storage/docs/public-datasets/sentinel-2>

2. Install DOS-/GUI-based Spectral Discovery for Sentinel-2 Imagery

The software is available at <http://www.GeoSage.com/>

- Prerequisite: Install free Microsoft VC++ 2015 Redistributable (x86)
- Prerequisite: Install the most popular open-source GIS software **QGIS**. *Spectral Discovery for Sentinel-2 Imagery* will use the GDAL_translate.exe tool included in QGIS to convert downloaded Sentinel-2 data from compressed JPEG2000 format to uncompressed, analysis-ready GeoTIFF format. (Ignore this step if a user has made such conversions already with other geospatial software.)

It is expected that a version of QGIS will be installed under the default "Program Files" or "Program Files (x86)" folder. *Spectral Discovery for Sentinel-2 Imagery* software can automatically detect its location. However, if a user has installed QGIS under a folder other than the above, the following change is required for the "ST_Options.txt" file located in the program folder: for the last two lines, from the current

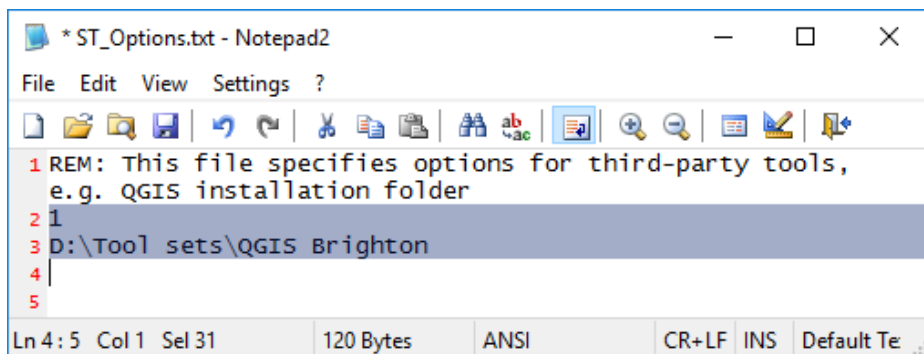


```

1 REM: This file specifies options for third-party tools, e.g.
  QGIS installation folder
2 0
3 C:\Program Files\QGIS Brighton
4
5

```

to something like this indicating where QGIS is installed:



```

1 REM: This file specifies options for third-party tools,
  e.g. QGIS installation folder
2 1
3 D:\Tool sets\QGIS Brighton
4
5

```

- Optional: Install free Google Earth Pro for displaying and verifying outputs

3. Run GUI (with 3 simple button clicks)

- **Button 1:** Select **metadata file** (*.xml) of your downloaded Sentinel-2 granule / tile, and the rest of GUI fields will be automatically populated.
- **Button 2:** Convert downloaded imagery data in JPEG2000 format to uncompressed, analysis-ready GeoTIFF format.
- **Button 3:** Run three steps altogether (Band Combination, Image Stretching, and Image Pan-sharpening) and output files in GeoTIFF format.

GUI: Sentinel-2 RGB / Stretch / Fuse / Feature Extraction

SOURCE: Spectral Discovery for Sentinel-2 Imagery, www.BigDataEarth.com, (C) 2020.
(This is a FULL Perpetual License.)

1. Input Sentinel-2 Imagery Bands in JPEG2000 + Convert JPEG2000 to GeoTIFF format

Metadata: metadata.xml **A: 1** **B: Convert JP2 -> GTiff 2**

Red: B12.tif

Green: B11.tif

Blue: B8A.tif

+ "Pan" (10m band): B04.tif

Use 10m-resolution bands: Natural Color B04/B03/B02

Use 20m-resolution bands: SWIR/NIR - B12/B11/B8A

Use 60m-resolution bands: Sentinel-2 vs. Landsat-8 Bands

Linear Stretch (Cutoffs at both ends, %)

	Left side	Right side
Red	1	0.2
Green	1	0.2
Blue	1	0.2

+ Nonlinear Stretch

	Range 0 - 40
Red	10
Green	10
Blue	10

2. Outputs (in GeoTIFF format)

Step 1 output: B12B11B8A_Res20m.tif ...

Applying simple and convenient bands combination **Step 1 run**

Step 2 output: B12B11B8A_Res20m_Stretched.tif ...

Applying linear and non-linear image stretching **Step 2 run**

Step 3 output: B12B11B8A_B04_Res10m_Fused.tif ...

Applying advanced and fast image pan-sharpening **Step 3 run**

3 **Run All (Step 1 + Step 2) -/+ Step 3** **GeoTIFF -> Google Earth Pro**

Help - PDF

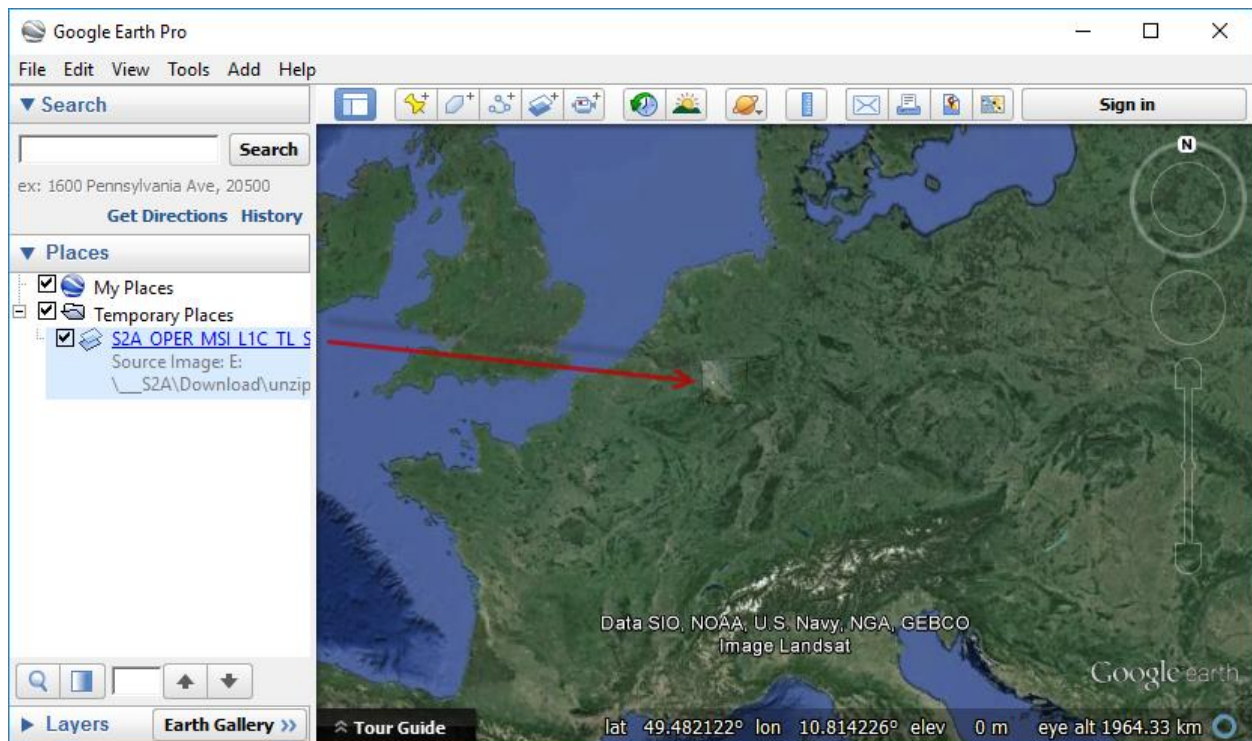
Users may modify and optimise image stretching parameters for various visual styles of the output.

The command-line of each run is stored in a **log.txt** file under the data folder. Users who are experienced with DOS batch runs will find this file very handy (e.g. with this file the runs can be repeated entirely in DOS console without the GUI). Users may also use the log file to edit DOS batch command-lines for more efficient implementation when dealing with 100s or 1,000s of Sentinel-2 granules/tiles.

4. Display Stretched and Pan-sharpened Imagery Composites (GeoTIFF format) **Directly in Google Earth Pro**

Google Earth Pro can import geospatial data in many formats, including GeoTIFF. Users can just simply drag the stretched or pan-sharpened imagery composite into Google Earth Pro, for easy display and comparison with the rich basemaps provided by Google Earth. (The imported imagery may be exported to KMZ format in Google Earth Pro.)

Google Earth Pro is free (since 30 January 2015) and a copy can be downloaded from Google: <http://www.google.com/earth/>



Example: Rapidly-processed daily fresh Sentinel-2 imagery easily displayed in Google Earth Pro

5. Additional Features for Innovative Applications

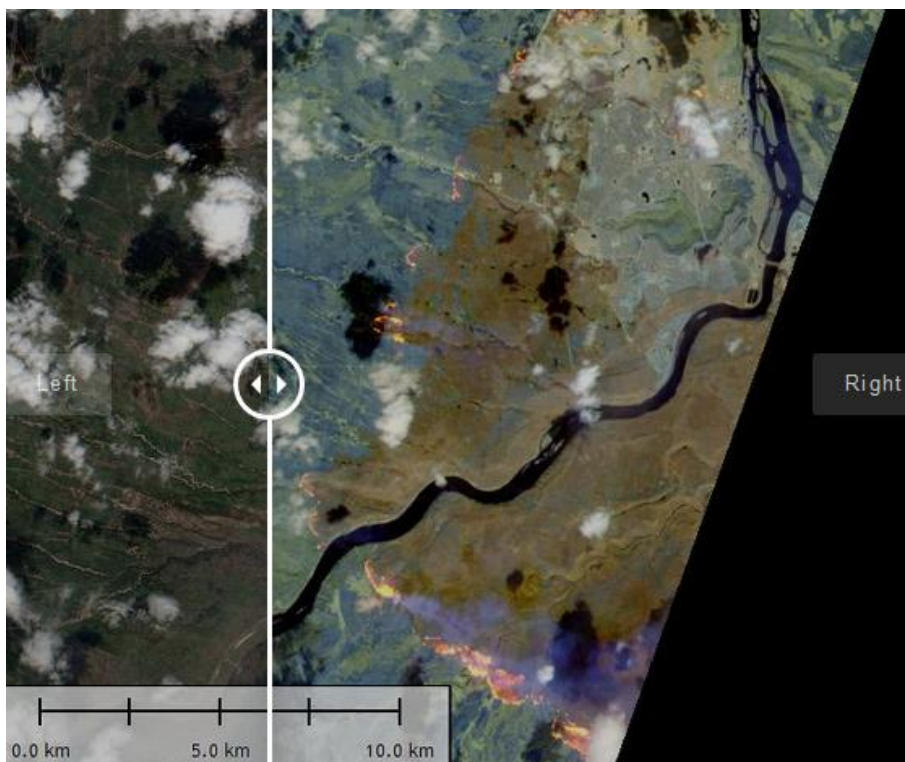
5.1 Batch processing To rapidly make many band combinations using the full spectral bands of Sentinel-2 imagery in a batch mode:

- 24 = 4x3x2, using 4 multispectral bands at **10m-resolution** - Bands 02, 03, 04, 08 (~10 GB disk space required for each granule / tile)
- 120 = 6x5x4, using 6 multispectral bands at **20m-resolution** - Bands 05, 06, 07, 8a, 11, 12 (~12GB disk space required for each granule / tile)
- 6 = 3x2x1, using 3 multispectral bands at **60m-resolution** - Bands 01, 09, 10 (~0.1 GB disk space required for each granule / tile)

A simple yet extremely powerful way of image (visual) analysis: Through rapid, various band combinations, important features/phenomena of interest on Earth land surface can be **better highlighted and revealed**.

5.2 See the invisible

Sentinel-2 short-wave infrared (SWIR) bands are capable of revealing wildfire hotspots and lava flows/heat through thick smokes.



Example: The May 2016 Fort McMurray Fire, Alberta, Canada. Left: Natural colour imagery showing full smoke; Right: False-colour SWIR imagery. Tile name: 12/V/VH; Date: 5/5/2016.

5.3 Exploratory image feature extraction with image feature indices and band ratios

+ More Tools for Full Perpetual License

24 Band Combos (use 10m bands) 120 Band Combos (20m) 6 Band Combos (60m)

+ Rapidly calculating image feature indices and band ratios (each with 3 outputs in GeoTIFF)

Threshold
(Threshold = ~0.3 +/-0.1) (Threshold = ~0.15 +/-0.05)

Generic form:

Band A:

Band B:



Example: Calculating feature indices with three types of outputs produced automatically from the software. Left: Natural colour imagery; Right: NDVI. Tile name: 10/S/EG; Date: 15/4/2016. Location: San Francisco.

Appendix - Main Steps in DOS-based Spectral Discovery for Sentinel-2 Imagery

```

Spectral Discovery for Sentinel-2 (DOS)
Sentinel2_RGB.exe B11.tif B8A.tif B05.tif B11B8AB05.tif (for false color)
3. Before pan-sharpening, users may produce stretched RGB file in Step 2:
Sentinel2_Stretch.exe 1 2 3 -s 1 0.2 1 0.2 1 0.2 10 10 10
B04B03B02.tif B04B03B02_stretched_res10m.tif
4. Typical pan-sharpening command-line:
Sentinel2_Fuse.exe 1 -s 1 0.2 1 0.2 1 0.2 10 10 10
B04.tif B11B8AB05.tif B11B8AB05_B04_fused_res10m.tif
5. For more examples and tips, please refer to software features and tutorials
on the website.

Software Full Name:

Spectral Discovery for Sentinel-2 Imagery (Version 3.1)
Step 3: Advanced and Fast Image Pan-sharpening

DOS-based command-line tool for rapidly pan-sharpening the medium-resolution
Sentinel-2 satellite imagery in GeoTIFF format.
Developer: http://www.BigDataEarth.com/

C:\Program Files (x86)\BigDataEarth\ST_Sentinel2_DOS>

```

Step 1: Simple Band Combination

DOS-based command-line tool for simple and convenient band combinations

Sentinel2_RGB.exe

<red_band_in> <green_band_in> <blue_band_in> <RGB_out.tif>

Help

1. This tool specifically targets Sentinel-2 imagery in uncompressed GeoTIFF format. It may be converted from the imagery in JPEG2000 format used by the ESA Sentinel-2 program, e.g. Sentinel-2 imagery on AWS.
2. <red_band_in> <green_band_in> <blue_band_in>:
Each multispectral input should be 16-bit, single-band GeoTIFF file.
<RGB_out.tif>:
Output RGB file will be 16-bit, three-band GeoTIFF file.
3. Since multispectral data are provided in separate bands, users need to combine related multispectral bands together in order to make a three-band multispectral input file, using the band combination tool, e.g.
Sentinel2_RGB.exe B04.tif B03.tif B02.tif B04B03B02.tif (for natural color)
Sentinel2_RGB.exe B08.tif B04.tif B03.tif B08B04B03.tif (for color infrared)
Sentinel2_RGB.exe B11.tif B8A.tif B05.tif B11B8AB05.tif (for false color)

Step 2: Adaptive Image Stretching

DOS-based command-line tool for adaptive linear and nonlinear image stretching

Sentinel2_Stretch.exe

```
<red_band_order> <green_band_order> <blue_band_order> -s  
<image_stretch_band1_left_cut> <image_stretch_band1_right_cut>  
<image_stretch_band2_left_cut> <image_stretch_band2_right_cut>  
<image_stretch_band3_left_cut> <image_stretch_band3_right_cut>  
<nonlinear_stretch_band1> <nonlinear_stretch_band2> <nonlinear_stretch_band3>  
<RGB_in.tif> <RGB_stretched_out.tif>
```

Parameters - Band order

<red_band_order>:

Order of the Red band in the multi-band input file, range [1-3]

<green_band_order>:

Order of the Green band in the multi-band input file, range [1-3]

<blue_band_order>:

Order of the Blue band in the multi-band input file, range [1-3]

Parameters - Specific to adaptive image stretching

The following parameters are used for both linear and non-linear image histogram stretching.

<image_stretch_band1_left_cut>

Linear stretching, % of pixels to be excluded at left-end for band1

Value range [0.0-40.0], typical value 2.0

<image_stretch_band1_right_cut>

Linear stretching, % of pixels to be excluded at right-end for band1

Value range [0.0-40.0], typical value 0.2

<image_stretch_band2_left_cut>

Linear stretching, % of pixels to be excluded at left-end for band2

Value range [0.0-40.0], typical value 2.0

<image_stretch_band2_right_cut>

Linear stretching, % of pixels to be excluded at right-end for band2

Value range [0.0-40.0], typical value 0.2

<image_stretch_band3_left_cut>

Linear stretching, % of pixels to be excluded at left-end for band3

Value range [0.0-40.0], typical value 2.0

<image_stretch_band3_right_cut>

Linear stretching, % of pixels to be excluded at right-end for band3

Value range [0.0-40.0], typical value 0.2

<nonlinear_stretch_band1>

Nonlinear stretching coefficient/weight for band1

Value range [0.0-40.0], typical values 5, 10, 15, ...

<nonlinear_stretch_band2>

Nonlinear stretching coefficient/weight for band2

Value range [0.0-40.0], typical values 5, 10, 15, ...

<nonlinear_stretch_band3>

Nonlinear stretching coefficient/weight for band3

Value range [0.0-40.0], typical values 5, 10, 15, ...

Parameters - Specific to input and output in GeoTIFF format

<RGB_in.tif>

Multispectral input prepared in Step 1 (band combination).

It must contain 16-bit, three-band data.

<RGB_stretched_out.tif>

Stretched output file name. Output will be 8-bit, three-band GeoTIFF file.

Examples/Tips

1. This tool specifically targets Sentinel-2 imagery in uncompressed GeoTIFF format. It may be converted from the imagery in JPEG2000 format used by the ESA Sentinel-2 program, e.g. Sentinel-2 imagery on AWS.
2. Since multispectral data are provided in separate bands, users need to combine related multispectral bands together in order to make a three-band multispectral input file, using the band combination tool in Step 1, e.g.
Sentinel2_RGB.exe B04.tif B03.tif B02.tif B04B03B02.tif (for natural color)
Sentinel2_RGB.exe B08.tif B04.tif B03.tif B08B04B03.tif (for color infrared)
Sentinel2_RGB.exe B11.tif B8A.tif B05.tif B11B8AB05.tif (for false color)
3. Typical image stretching command-line:
Sentinel2_Stretch.exe 1 2 3 -s 1 0.2 1 0.2 1 0.2 10 10 10
B04B03B02.tif B04B03B02_stretched_res10m.tif
4. If a scene contains a large proportion of white areas (e.g. cloud and snow), try to increase the right-end cut-off values for their exclusion. This may be automated along with the estimated % of cloud cover of the scene.
5. For more examples and tips, please refer to software features and tutorials on the website.

Step 3: Advanced Image Pan-sharpening

DOS-based command-line tool for rapidly pan-sharpening the 20m- or 60m-resolution Sentinel-2 satellite imagery into sharp 10m-resolution

Sentinel2_Fuse.exe

```
<pan-sharpening_method> -s  
<image_stretch_band1_left_cut> <image_stretch_band1_right_cut>  
<image_stretch_band2_left_cut> <image_stretch_band2_right_cut>  
<image_stretch_band3_left_cut> <image_stretch_band3_right_cut>  
<nonlinear_stretch_band1> <nonlinear_stretch_band2> <nonlinear_stretch_band3>  
<pan_band_in.tif> <ms_in.tif> <fused_out.tif>
```

Parameters - Specific to algorithms

<pan-sharpening_method>
1 - Optimization 1 (recommended); 2 - Optimization 2

Parameters - Specific to adaptive image stretching

The following parameters are used for both linear and non-linear image stretching, identical to those of the image stretching tool (Step 2) included in this package. Type Sentinel2_Stretch.exe for more information.

<image_stretch_band1_left_cut>
Linear stretching, % of pixels to be excluded at left-end for band1
Value range [0.0-40.0], typical value 2.0

<image_stretch_band1_right_cut>
Linear stretching, % of pixels to be excluded at right-end for band1
Value range [0.0-40.0], typical value 0.2

<image_stretch_band2_left_cut>
Linear stretching, % of pixels to be excluded at left-end for band2
Value range [0.0-40.0], typical value 2.0

<image_stretch_band2_right_cut>
Linear stretching, % of pixels to be excluded at right-end for band2
Value range [0.0-40.0], typical value 0.2

<image_stretch_band3_left_cut>
Linear stretching, % of pixels to be excluded at left-end for band3
Value range [0.0-40.0], typical value 2.0

<image_stretch_band3_right_cut>
Linear stretching, % of pixels to be excluded at right-end for band3
Value range [0.0-40.0], typical value 0.2

<nonlinear_stretch_band1>
Nonlinear stretching coefficient/weight for band1
Value range [0.0-40.0], typical values 5, 10, 15, ...
<nonlinear_stretch_band2>
Nonlinear stretching coefficient/weight for band2
Value range [0.0-40.0], typical values 5, 10, 15, ...
<nonlinear_stretch_band3>
Nonlinear stretching coefficient/weight for band3
Value range [0.0-40.0], typical values 5, 10, 15, ...

Parameters - Specific to input and output in GeoTIFF format

<pan_band_in.tif>
Higher resolution (10m) gray band of Sentinel-2 imagery, typically use Band 4 (red band).
This band must contain 16-bit, single-band data.
<ms_in.tif>
Multispectral input prepared in Step 1 (band combination).
It must contain 16-bit, three-band data.
<fused_out.tif>
Pan-sharpened output file name. Output will be 8-bit, three-band GeoTIFF file.

Examples/Tips

1. This tool specifically targets Sentinel-2 imagery in uncompressed GeoTIFF format. It may be converted from the imagery in JPEG2000 format used by the ESA Sentinel-2 program, e.g. Sentinel-2 imagery on AWS.
2. Since multispectral data are provided in separate bands, users need to combine related multispectral bands together in order to make a three-band multispectral input file, using the band combination tool in Step 1, e.g.
Sentinel2_RGB.exe B04.tif B03.tif B02.tif B04B03B02.tif (for natural color)
Sentinel2_RGB.exe B08.tif B04.tif B03.tif B08B04B03.tif (for color infrared)
Sentinel2_RGB.exe B11.tif B8A.tif B05.tif B11B8AB05.tif (for false color)
3. Before pan-sharpening, users may produce stretched RGB file in Step 2:
Sentinel2_Stretch.exe 1 2 3 -s 1 0.2 1 0.2 1 0.2 10 10 10
B04B03B02.tif B04B03B02_stretched_res10m.tif
4. Typical pan-sharpening command-line:
Sentinel2_Fuse.exe 1 -s 1 0.2 1 0.2 1 0.2 10 10 10
B04.tif B11B8AB05.tif B11B8AB05_B04_fused_res10m.tif
5. For more examples and tips, please refer to software features and tutorials on the website.

Step 4: Calculating image feature indices and band ratios

DOS-based command-line tool for rapidly calculating image feature indices and band ratios, with the 10m-, 20m- and 60m-resolution Sentinel-2 satellite imagery

Sentinel2_Feature.exe

`<calculation_method> <input_band1.tif> <input_band2.tif> <threshold>`

Parameters

`<calculation_method>`

1 - Normalized Difference Image Feature Indices $(A-B)/(A+B)$, e.g.

NDVI (Normalized Difference Vegetation Index) = $(NIR-RED)/(NIR+RED)$

NDWI (Normalized Difference Water Index) = $(GREEN-SWIR1)/(GREEN+SWIR1)$

2 - Calculating simple band ratios in the form of A/B

`<input_band1.tif> <input_band2.tif>`

For NDVI calculation, `<input_band1.tif>` should be Sentinel-2 Band 8 (NIR band)

`<input_band2.tif>` should be Sentinel-2 Band 4 (RED band).

`<threshold>`

The threshold value to be used for making a binary output image that shows classified features. E.g. in NDWI calculation, if a pixel value is greater than a defined threshold say 0.1, it is classified as water.

Help

1. This tool specifically targets Sentinel-2 imagery in uncompressed GeoTIFF format. It may be converted from the imagery in JPEG2000 format used by the ESA Sentinel-2 program, e.g. Sentinel-2 imagery on AWS.

2. Three output files are automatically generated by the program. Each is a single-band GeoTIFF file, ready to be displayed in Windows Photo Viewer, GIS and remote sensing software (e.g. QGIS), or Google Earth Pro.

- First output: 32-bit Float data type, useful for further analyses.
- Second output: 8-bit Byte data type, a color palette is applied.
- Third output: 8-bit Byte data type, a binary image to show classified features after a user-defined threshold is applied.

3. For NDVI and the generic form, a general color palette ("rainbow" shown below, from min to max) is used to highlight the wide distribution of pixel values. In the case of Sentinel-2 NDVI, the warmer color the pixel, the more dense vegetation is present.

